

Quick Install

We definitely recommend using quick install for Alpha Pro or TELE software for Windows XP SP3 (namely SP3).

Step 1. Mount video card into PC (if this is a part of the package) and **do not insert USB key**, turn PC on and wait until Windows completes loading.

Step 2. When Wizard for new hardware pops up just cancel it out.

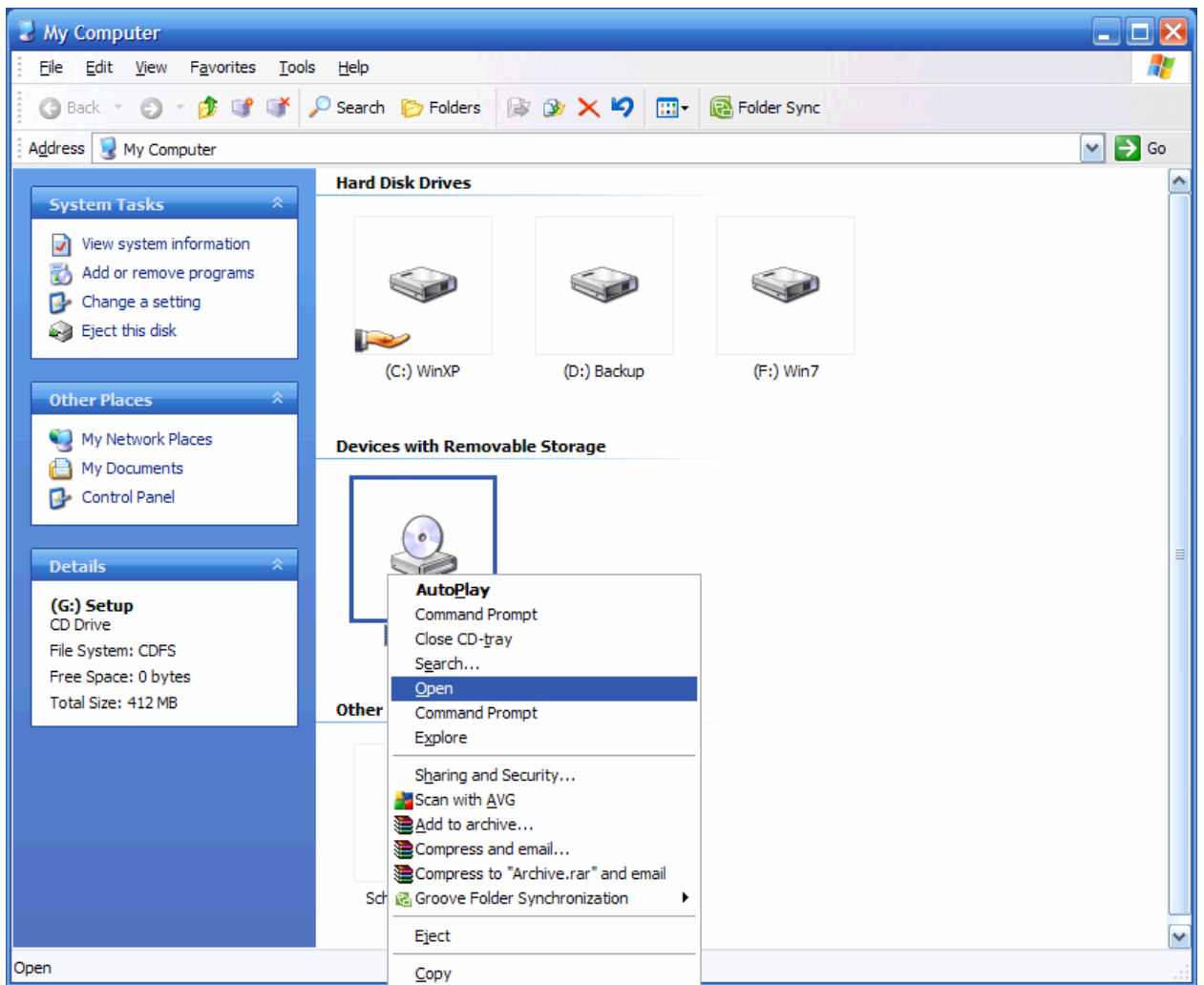


Step 3. Insert installation CD into DVD ROM (burner).

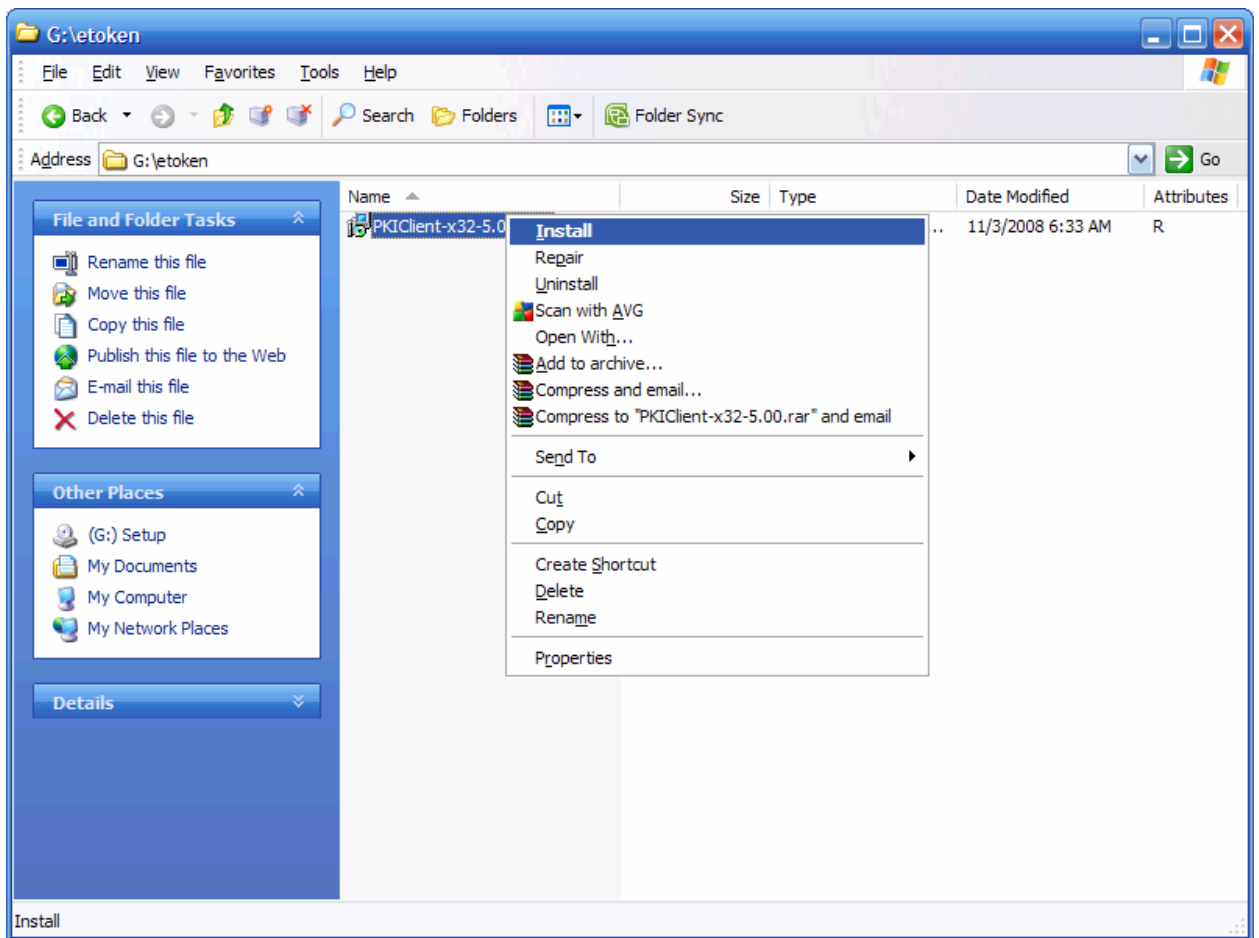
Step 4. When auto run window pops up just cancel it out.



Step 5. Double click My Computer on a desktop, right click on installation CD and choose "Open" from context menu.



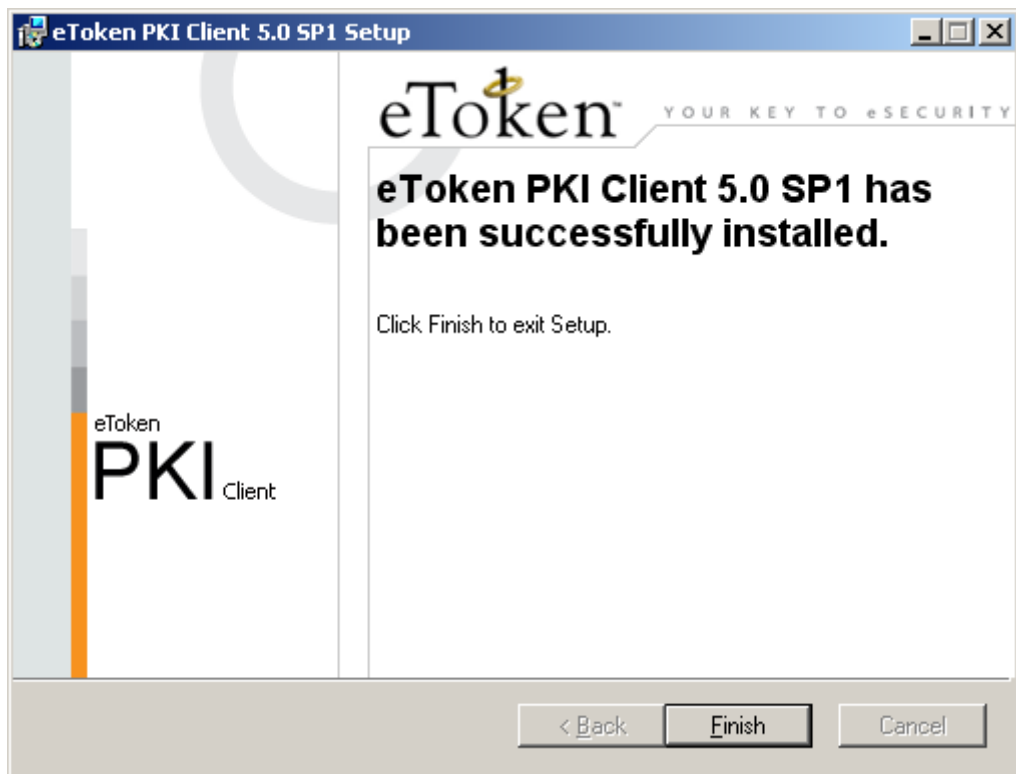
Step 6. Then find folder «etoken» and double click file PKIClient-..., or right click on file and choose “Install” from context menu.



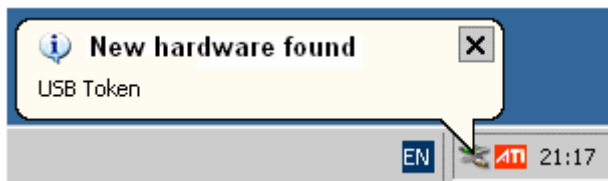
Step 7. Install software eToken simply following installation wizard.



At the end press «Finish».



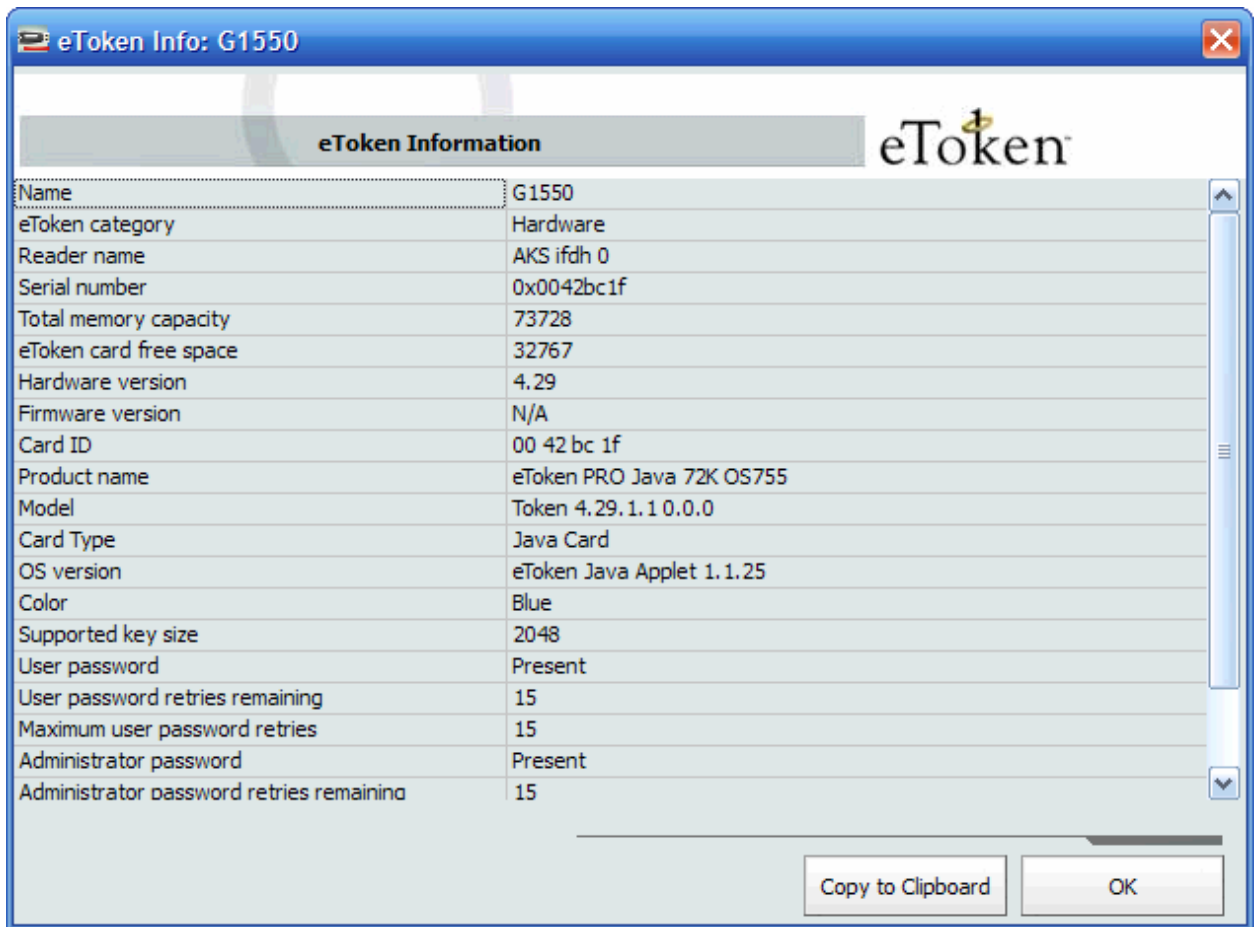
Step 8. Only **AFTER** installation of eToken insert USB key and **WAIT** until Windows seeks and installs drivers for USB Token (it may take some time).



After that call setup for eToken – Start -> All Programs -> eToken -> eToken PKI Client -> eToken Properties.



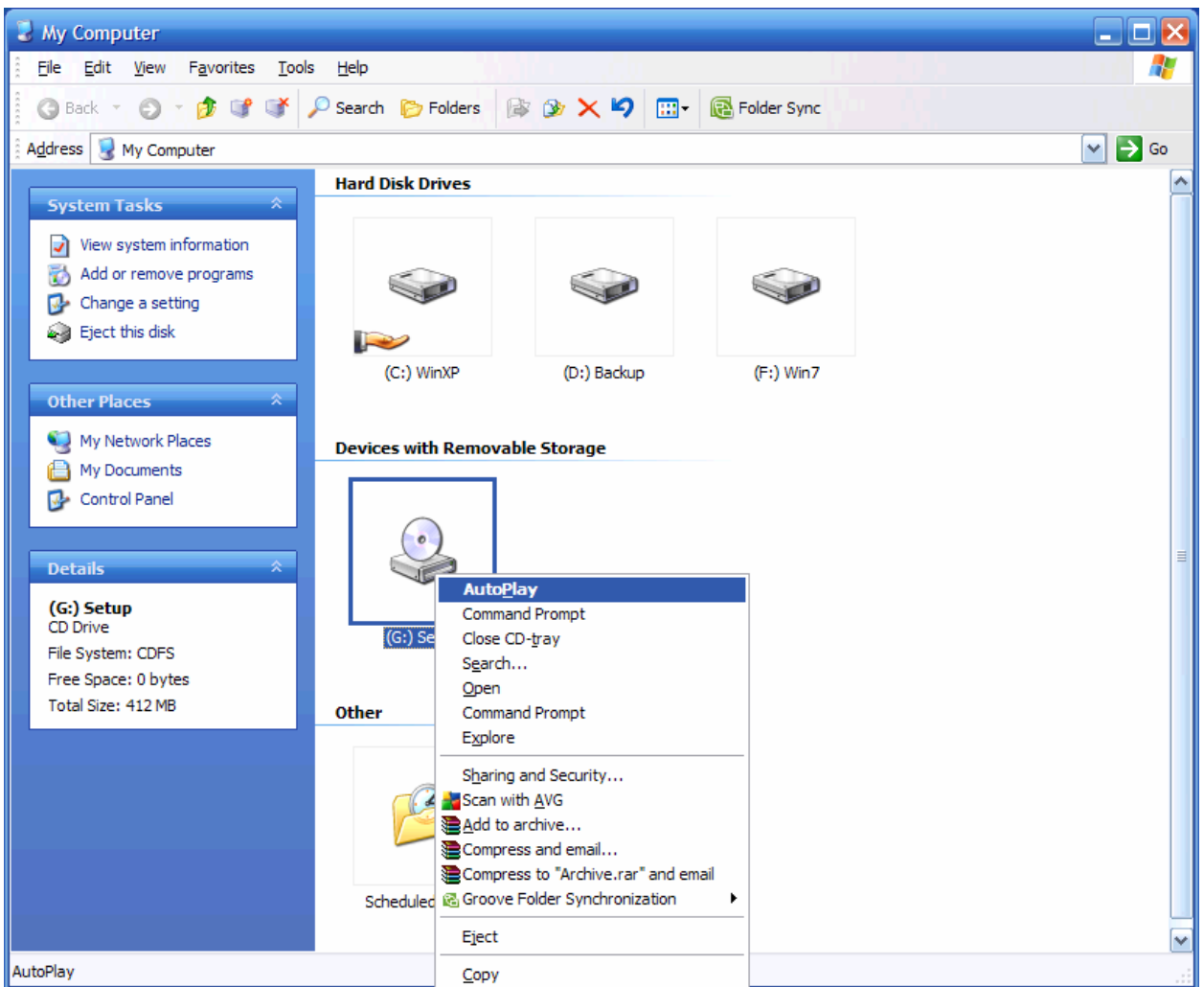
Press “View eToken Info” and review parameters of eToken:



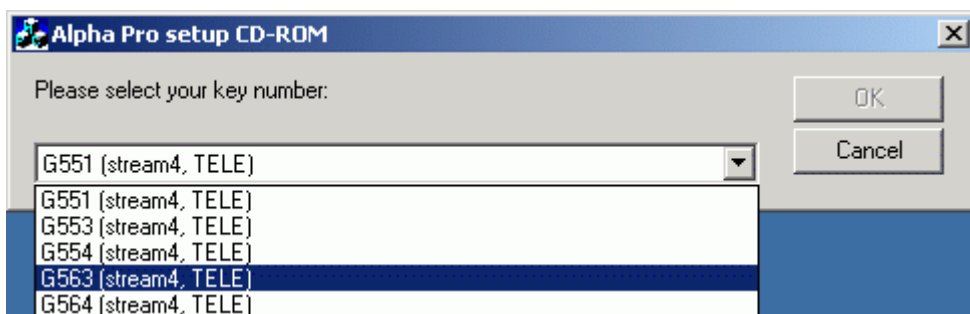
Value in entry “User password retries remaining” has to be greater than 0.

Attention! During review of settings do not change anything, especially password, even when you are requested for doing that – simply reject closing window with request. The latter may occur if Mozilla Firefox has been installed on your PC. **DO NOT INSTALL MOZILLA FIREFOX** along with Alpha Pro and TELE.

Step 9. Double click “My Computer” on a desktop; and then double click icon for installation CD or right click this icon and choose Autorun from context menu.



Step 10. When Autorun window shows up you **must choose** entry for your USB key from dropdown list «Please select your key number: ».



When you highlight the necessary entry button “OK” becomes active. Please check if it is the package that you have ordered:

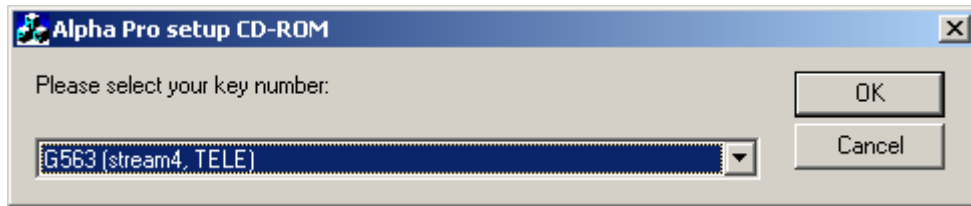
Alpha Pro – software Alpha Pro only

TELE - software Alpha Pro and automation software TELE

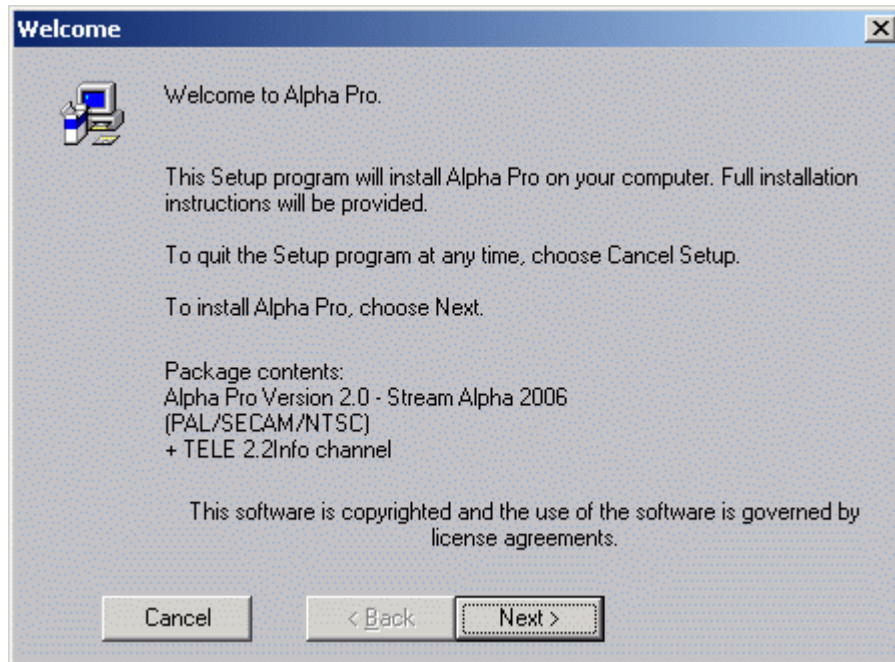
TELE, InfoChannel – software Alpha Pro, automation software TELE and additional modul TELE Infochannel

mpeg2ts, TELE, InfoChannel - software Alpha Pro, automation software TELE and additional modul TELE Infochannel for IP broadcast in mpeg2

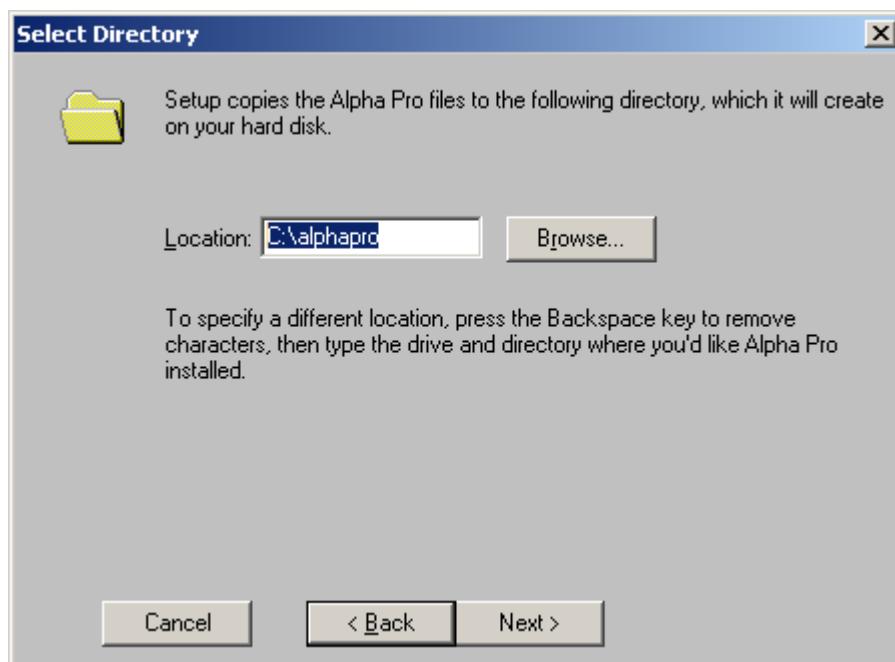
And press «OK».



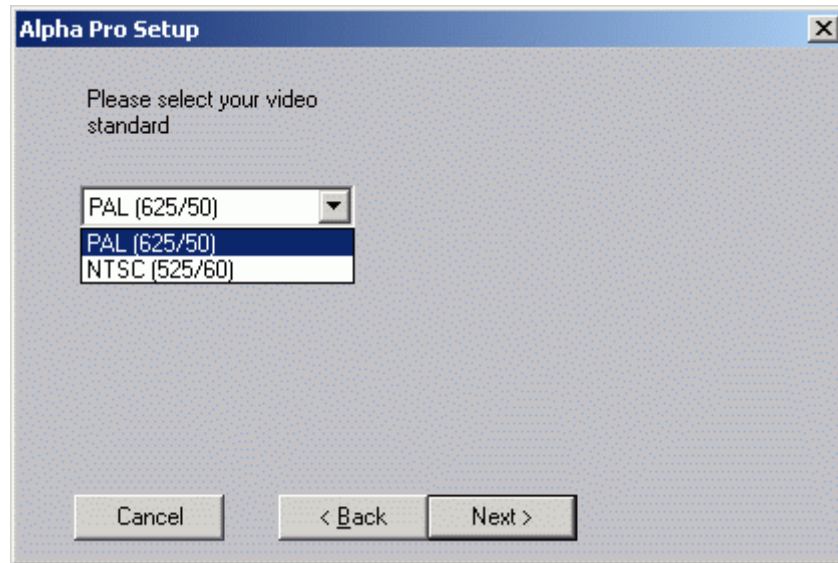
Step 11. The first window is a welcome window with the list of features to be installed. Please check them out and press «Next».



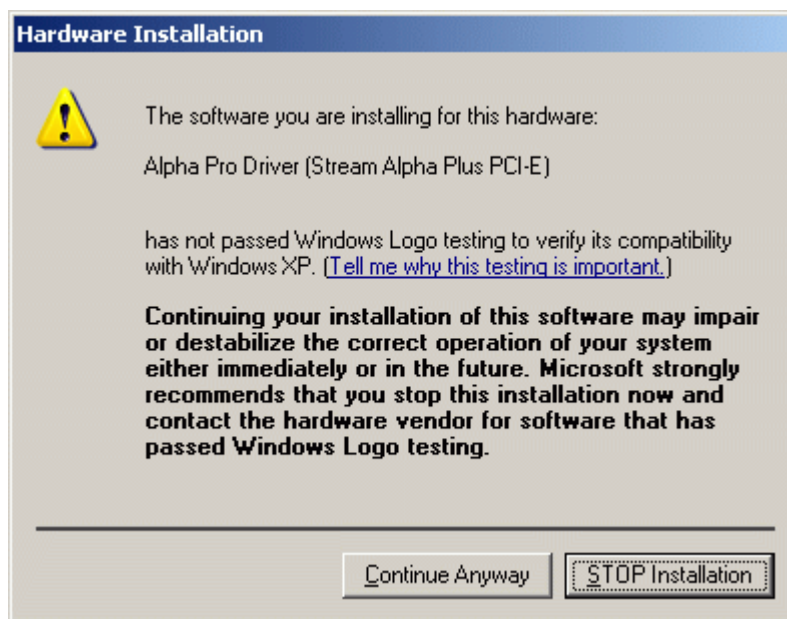
Step 12. In the next window you may designate location and name of installation folder. We recommend alphapro on drive C:. Press «Next».



Next window is for selection of TV standard either PAL (625/50) or NTSC (525/60):

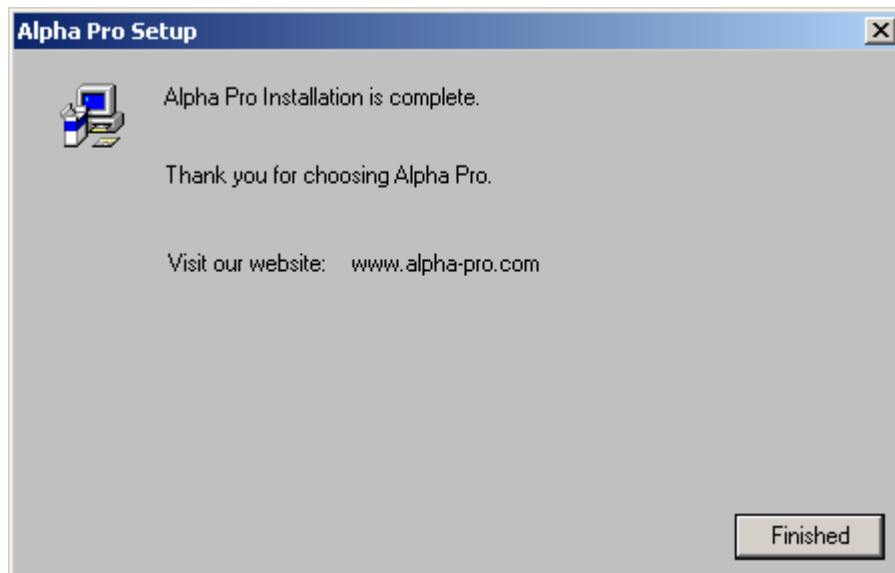


Step 13. Then warning window (see below) **must** show up (except for mpeg2ts, TELE, InfoChannel). Press "Continue Anyway".

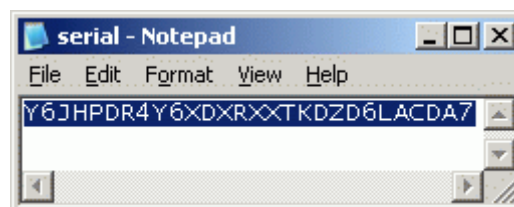


Note: If this windows does not come up, complete installation and reinstall driver of video card or unknown device in manual mode using set of drivers located in installation folder (until warning window shows up).

IIIar 14. Complete installation pressing «Finished».



Editing window with serial number (file "C:\alphapro\serial.txt") will pop up. This number will be used for activation (see below).



Step 15. If you have installed software with this serial number in a past in current installation of Windows, then this step will be skipped.

Attention! Do not forget to set a system time on a PC.

SPECIAL CASE – if it was prior installation of **PRECEDING** version of software with the **SAME** serial number.

In this case there is **NO NEED** for activation. You should save activation attempt using deactivation procedure: Start -> All Programs -> Alpha Pro -> Deactivate or calling direct C:\alphapro\protect.exe. Subsequent activation will take place during first launch of Alpha Pro or TELE, using obtained deactivation code (if any).

SPECIAL CASE – if it was preceding installation of software with **DIFFERENT** serial number.

There is **NO NEED** for activation – simply “Exit” activation. Go Start -> Run and type Regedit.exe in editable field. Find following entries in Windows registry:

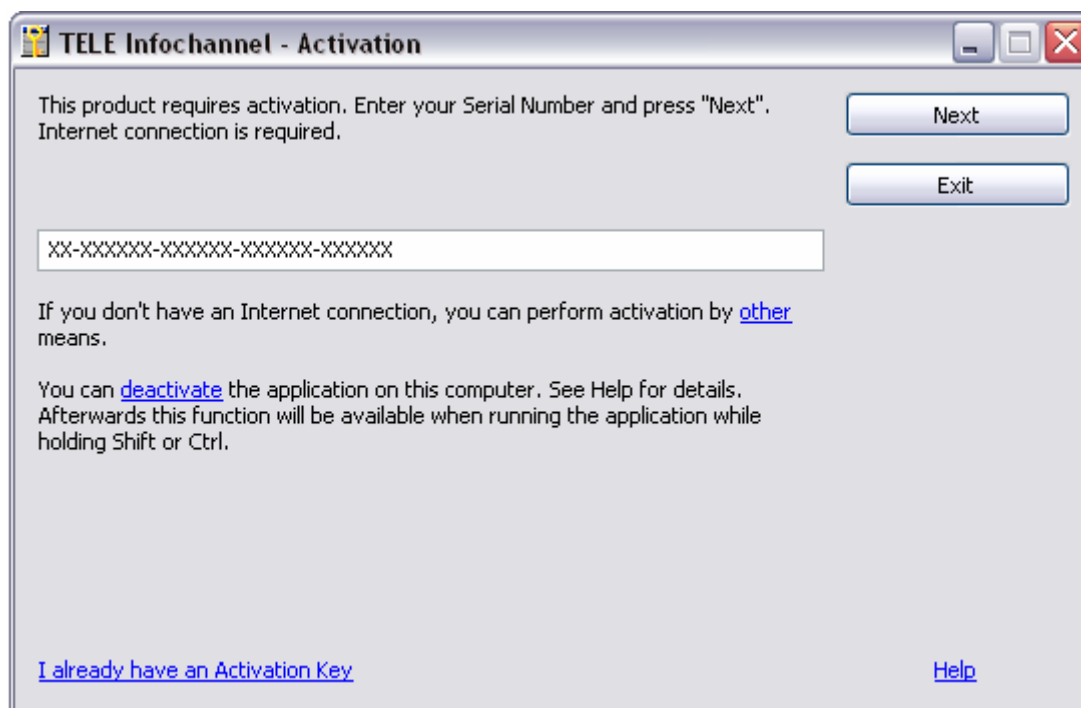
[HKEY_CURRENT_USER\Software\Dvornikov Mikhail]

or

[HKEY_LOCAL_MACHINE\ Software\Dvornikov Mikhail]

Activation will take place during first launch of Alpha Pro or TELE using serial number which can be found in file “C:\alphapro\serial.txt”.

STANDARD CASE – if there was no prior installation of Alpha Pro or TELE, then following window will pop up:



Press «Activate».

If your computer is connected to Internet, then after a while you will see confirmation window about successful activation and number of available attempts.

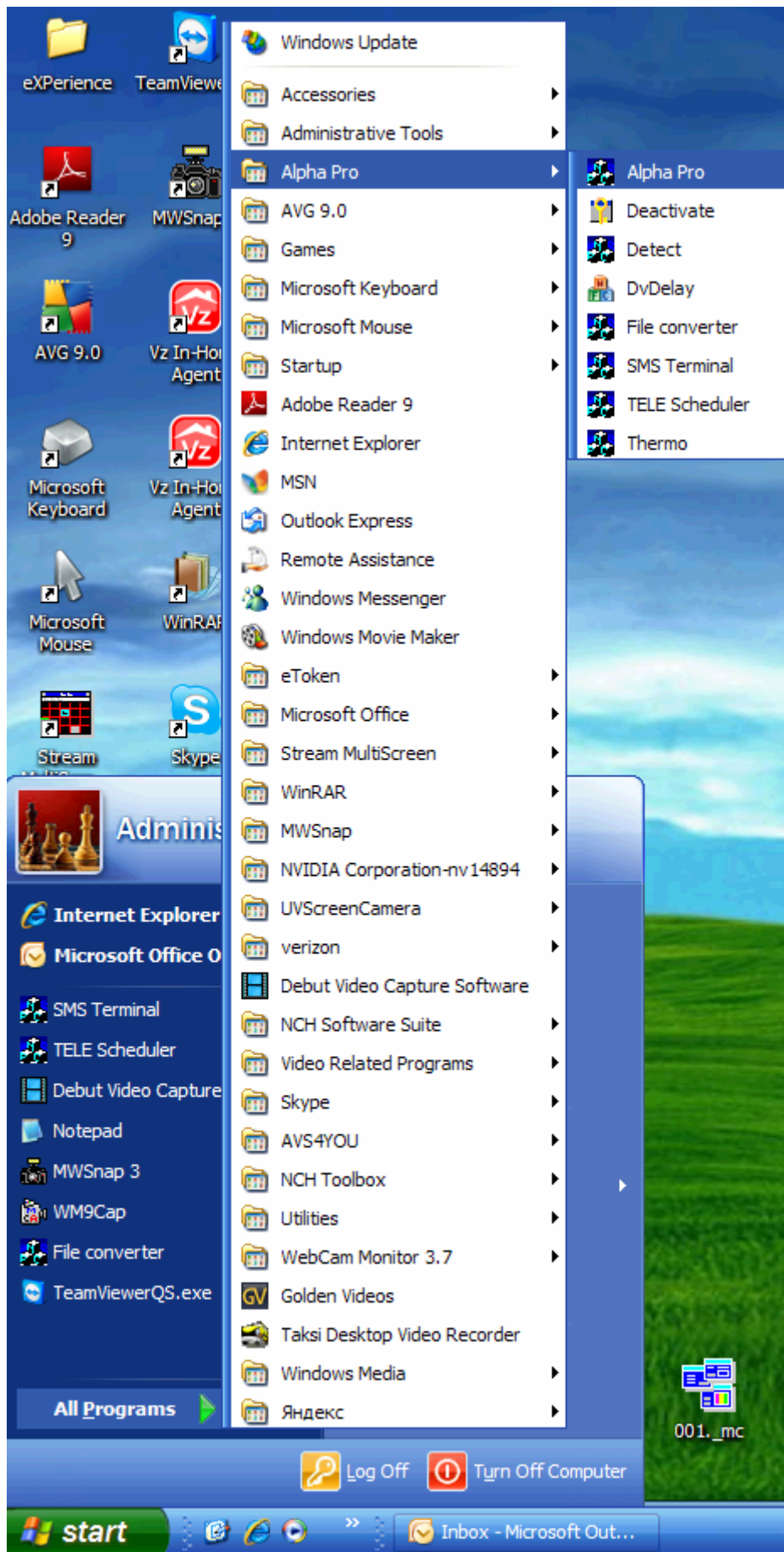
If your computer is not connected to Internet (or you can not get through FireWall), then you will receive an error message. In this case you will need a manual activation. It is described in great detail in guide in .pdf format located on installation CD or if you follow links:

<http://proactive.star-force.com/2.0/userinfo.php>.

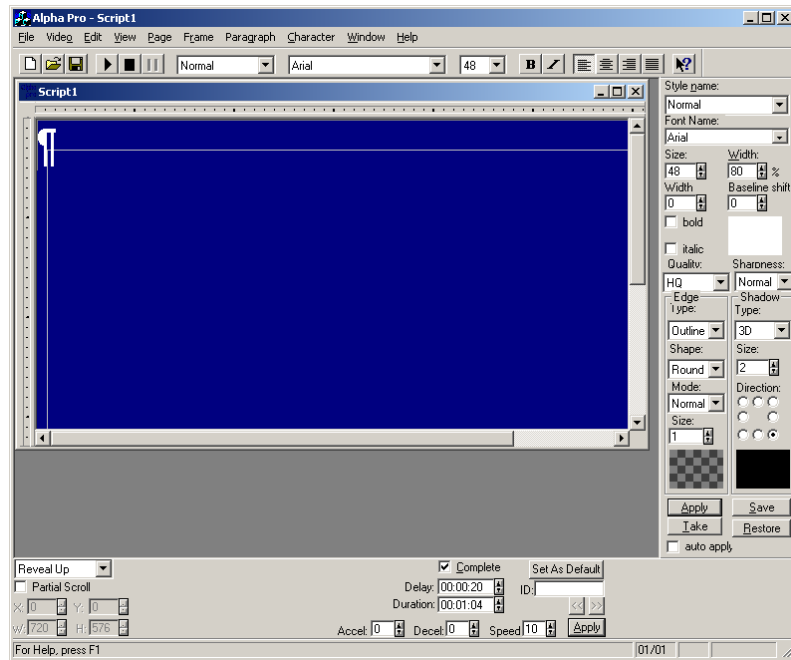
<http://www.star-force.ru/support/users/deactivate/old/>

<http://www.star-force.ru/support/users/group2.php>

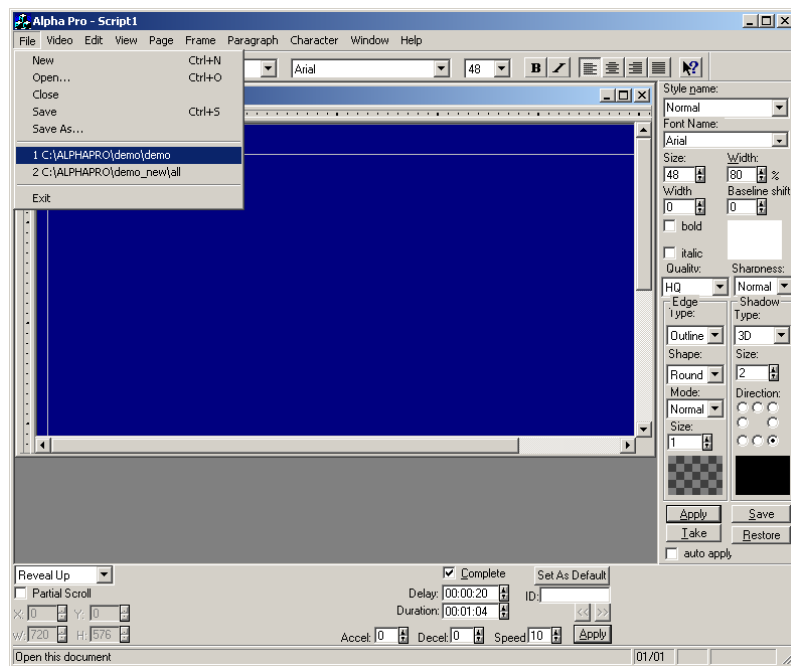
Step 16. First of all check if **ONLY** Alpha Pro is starting up. Go to Start -> All Programms -> Alpha Pro -> Alpha Pro.



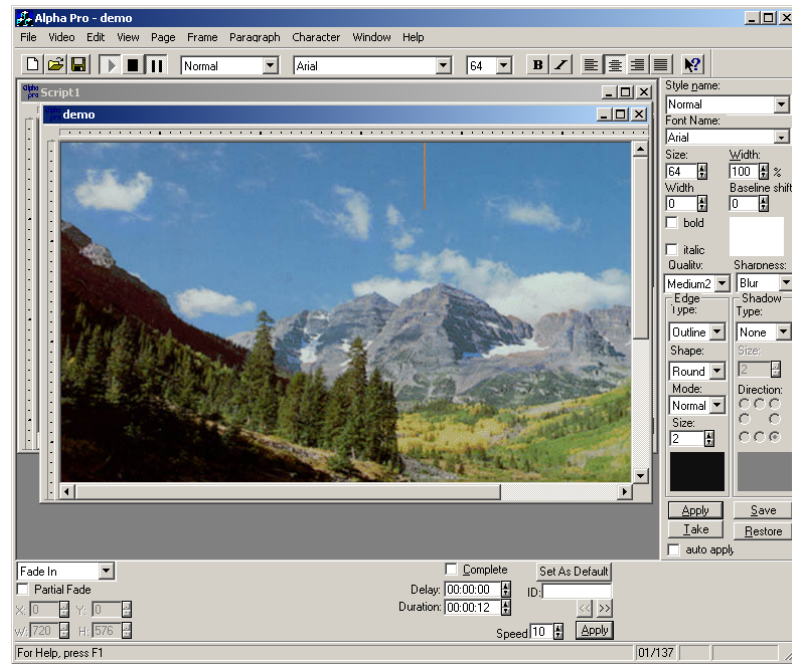
After a while (less than 30 sec) the main screen of Alpha Pro has to show up.



Step 17. It is advisable to check functionality of Alpha Pro in a first place. Load demo scenario “Demo” which is part of installation

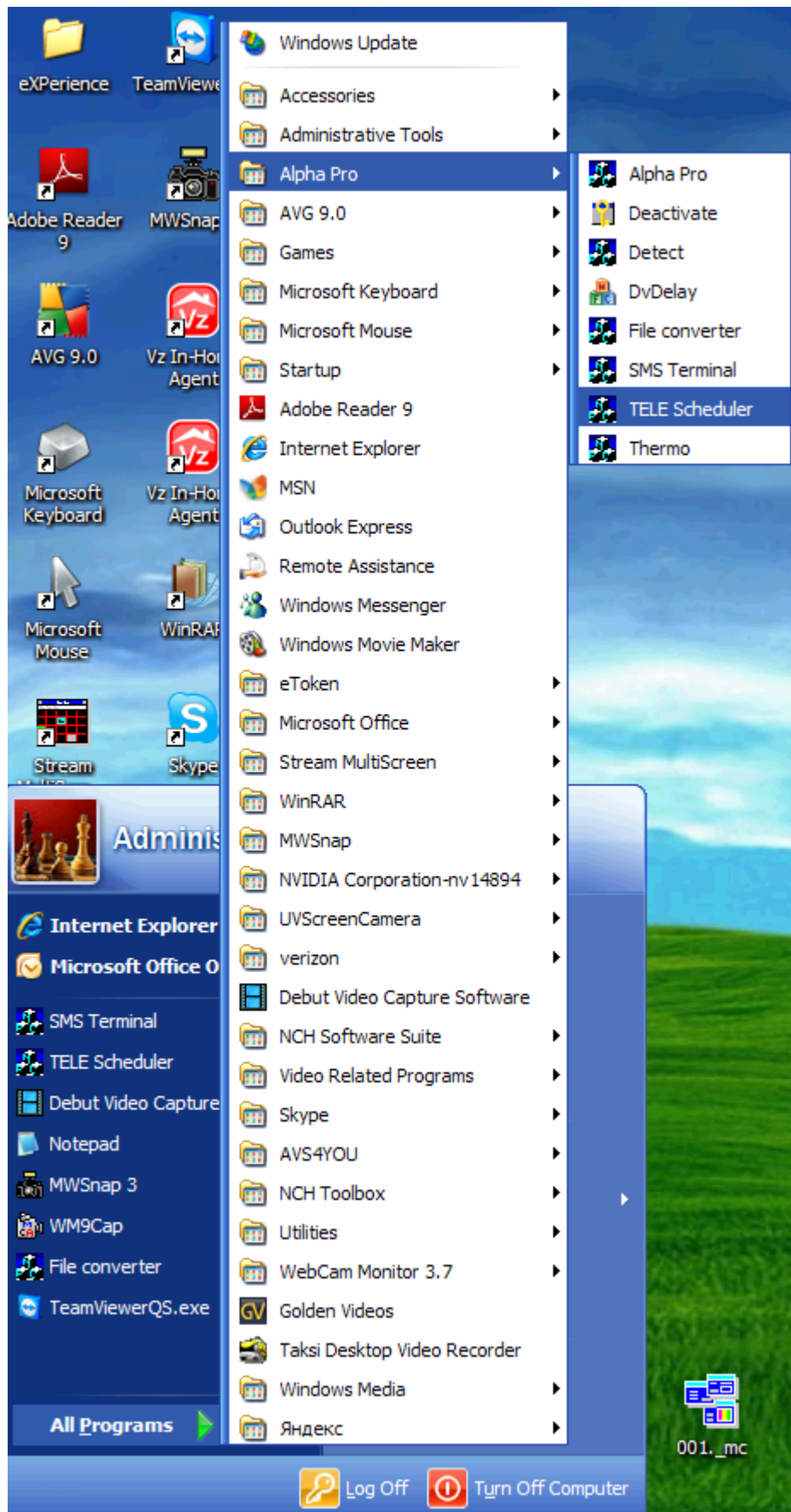


Start outputting it on a TV screen pressing button ► and pause pressing button || .

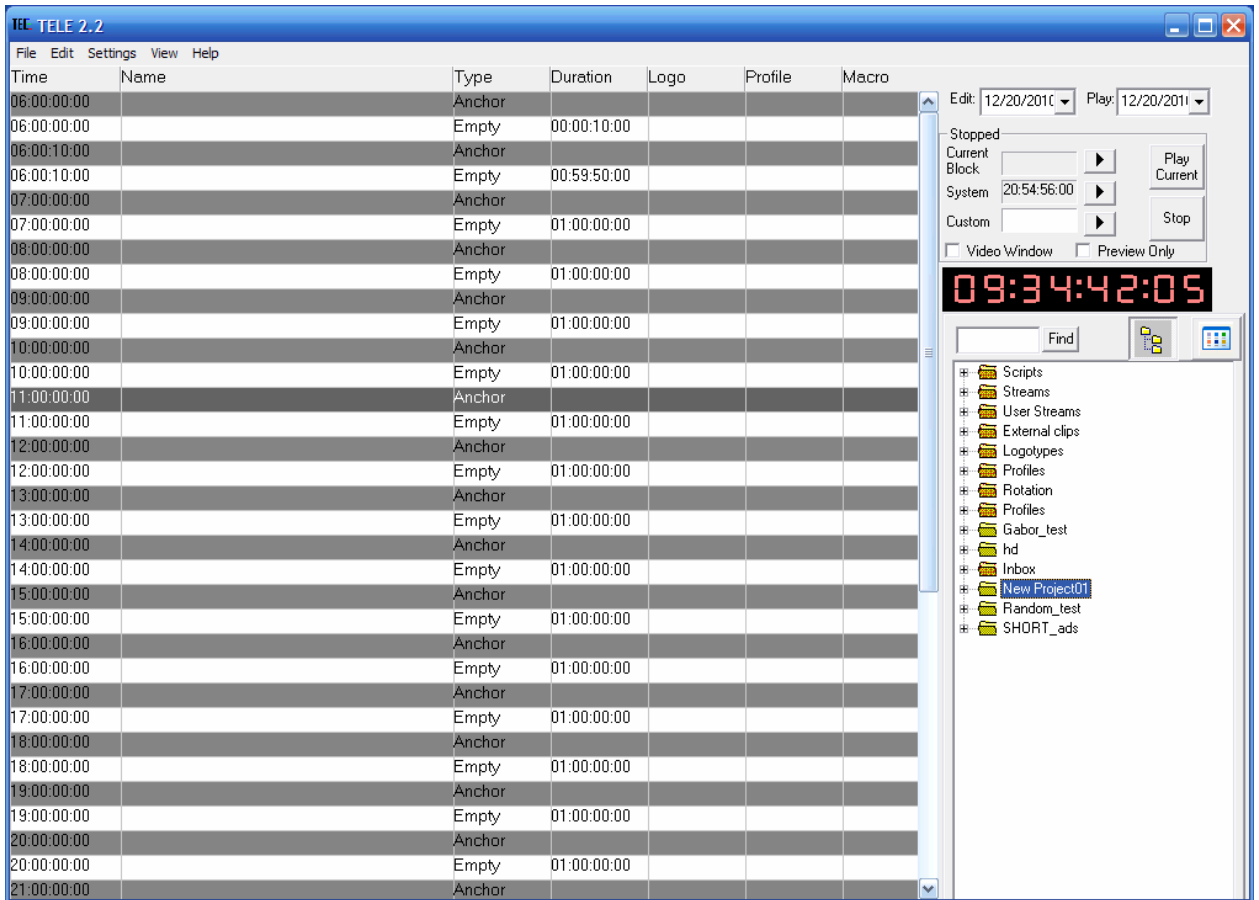


Make sure that demo is running smooth without “shaking” of displayed image and press stop button ■ twice.

Step 18. If TELE is a part of package, then check functionality of software going to Start -> All Programs -> Alpha Pro-> TELE Sheduler.

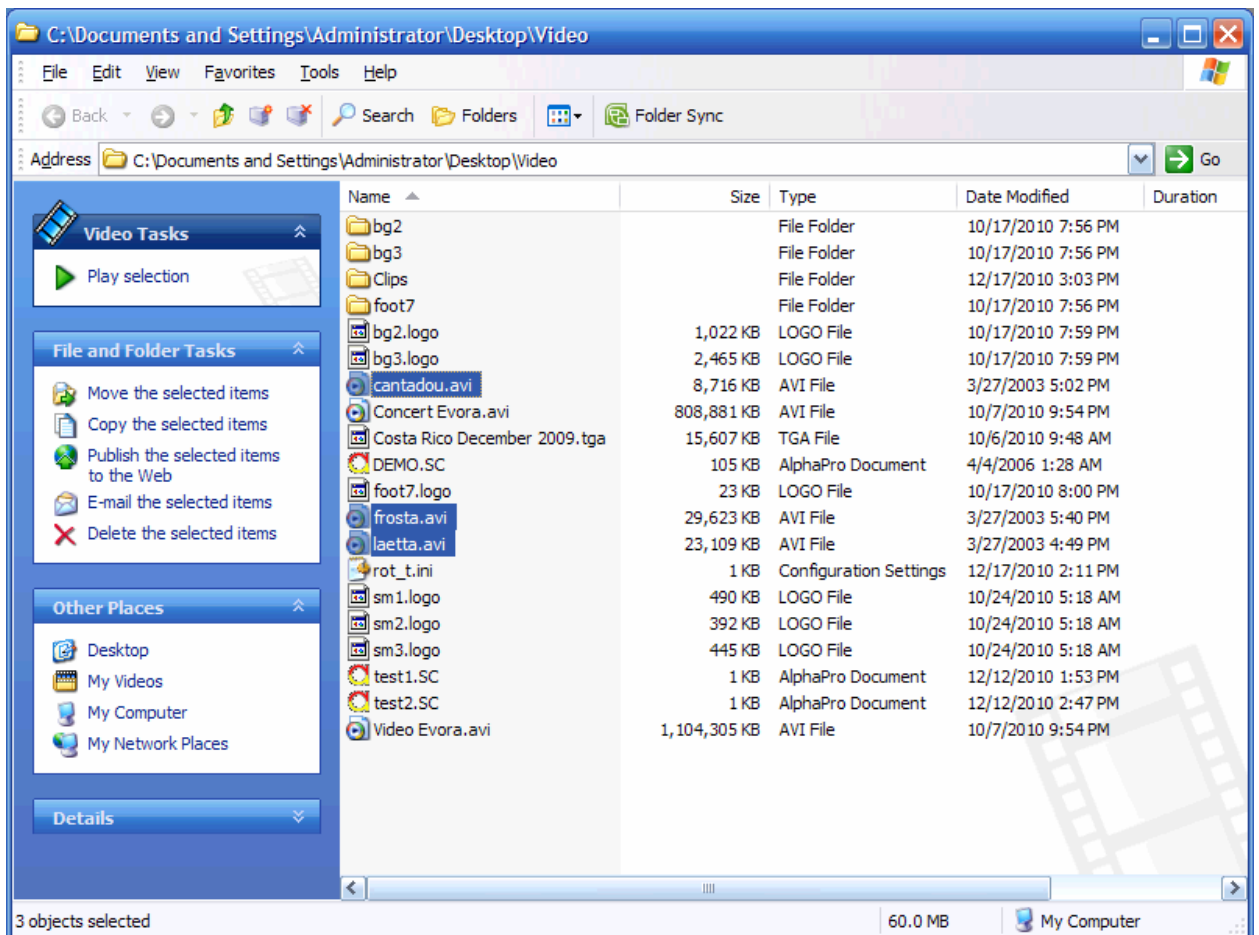


After a while the main screen of TELE has to show up with schedule for current day. Red running digits indicate current PC time.

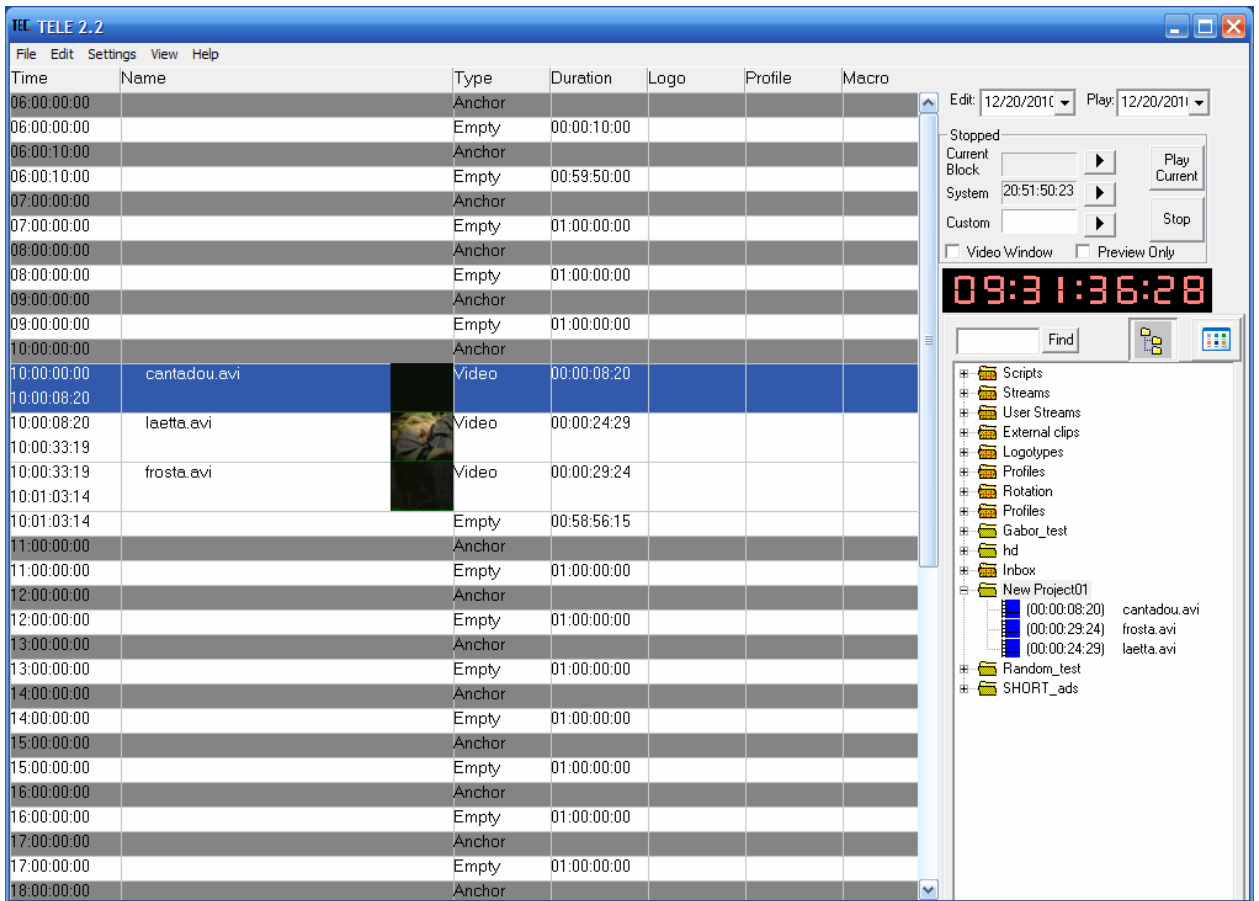


Exit program in reverse order – close TELE first and then Alpha Pro.

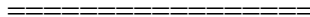
Step 19. It is recommended to check functionality of TELE. Copy clips from folder tele_avi on installation CD on a hard drive, register them in a project tree and drag-and-drop them into schedule. Optionally you can drag and drop them right from the folder (they automatically self register in “Inbox”).



Highlight first clip and press Spacebar on a keyboard. The output on a TV screen starts and it has to be smooth. Red running digits in a schedule will indicate time remaining till an end of clip.



It is possible to evaluate performance of system if you run DEMO.SC in Alpha Pro (see above) and clips in TELE. If CPU load in a Task Manager is equal 100% for extended period of time (not peaks), it means that power of your PC configuration is not sufficient.



If installation process is different from what is described above, then refer to documentation for installation of video card, activation and also FAQ section located on installation CD.