



# STREAM MULTIVIEW

## User Guide

### Introduction

Stream Labs Inc. appreciates your interest to our products and looks forward to fruitful cooperation.

This manual contains major approaches in handling of our software for monitoring of video signal called «Stream MultiView».

Should you have any questions, comments or requests with regard to functioning or documentation for "Stream MultiView" feel free to contact us at your convenience. We are very interested in getting of feedback.

ZAO "Stream Labs"

127273, Moscow, Berezovaya Alleya, property 5A, bldg. 5

Tel: +7 (495) 739-82-42

Fax: + 7 (495) 739-82-42

E-mail: [info@stream-labs.com](mailto:info@stream-labs.com)

[www.stream-labs.com](http://www.stream-labs.com)

## **Product Description**

Stream MultiView is a freely distributed application which is a part of installation package containing drivers for ingest and CG cards. Application displays either single or multiple video and audio signals streaming into inputs of video cards manufactured by Stream Labs.

Number of displayed sources depends on number of inputs on video card.

There is an option to monitor sound as well. Monitoring of video and sound for SDI Embedded is available for the first pair of stereo inputs ONLY.

Only one instance of Stream MultiView can be run on the same PC.

Supported video standards are: composite, SDI, HD-SDI. For detailed information about supported video standards turn to characteristics of particular type of video card.

## **List of supported video cards**

- Stream Labs WindSDI 2
- Stream Labs WindSDI HD
- Stream Labs MS4
- Stream Labs MS4+
- Stream Labs MS2
- Stream Labs MH4
- Stream Labs FX416
- Stream Labs Alpha+

## **System requirements**

1. PC with installed video card manufactured by Stream Labs.
2. Video card which supports OpenGL.

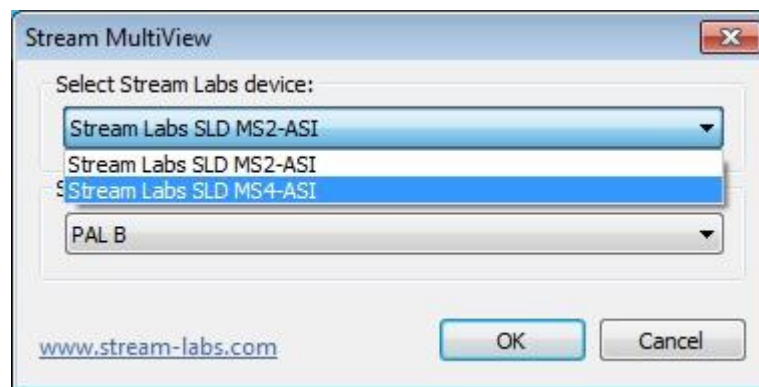
We recommend to use video cards nVidia, starting GeForce 7300 and up. In case of using of ATI there will be no deinterlacing.

3. Windows XP (32/64 bit), Windows 7 (32/64 bit).

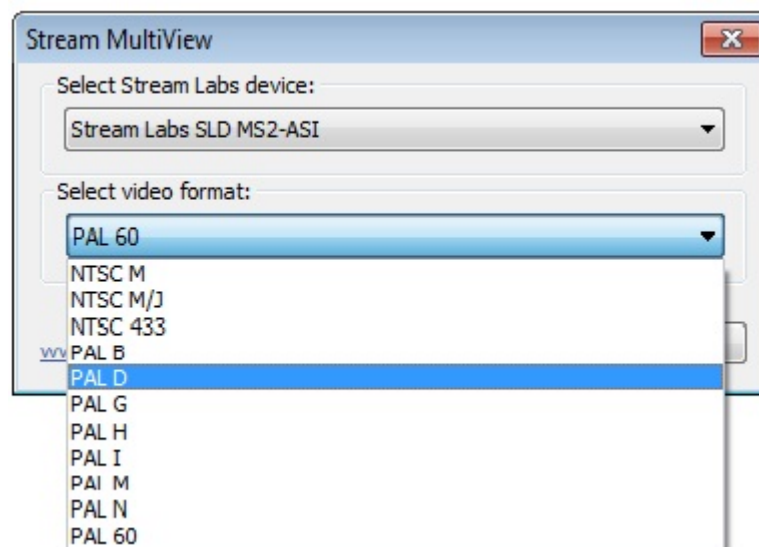
## Setup

After installation of driver you will see icon «Stream Multi View» on your desktop.

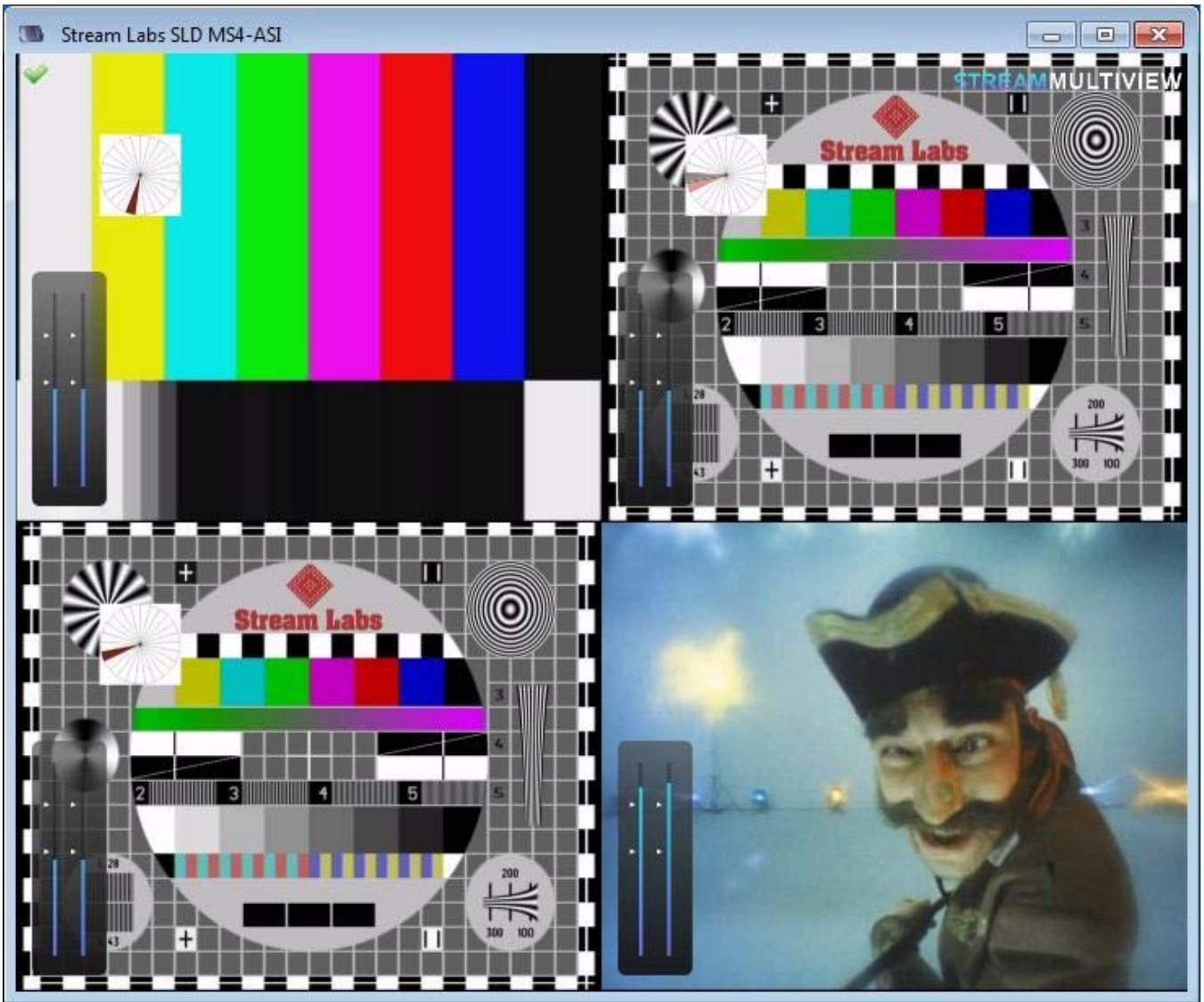
1. First of all select video card for video input in case when you have several video cards installed on the same PC. Press «OK».



2. Next step is to select video standard for input signal. Press «OK».



3. On a picture below capture of 4 asynchronous SDI video signals is demonstrated:



4. Mouse click on any window will expand view to full screen. Subsequent mouse click will return windows to original 4-windows view.

