

## TELE-IP

Encoder settings are located in Hardware Options window in Alpha Pro.

After changing the settings press **Apply**, then press **Restart** to make them take into effect

**Transport Streaming** (selected during Setup)

Network	
Destination Address	127.0.0.1
Port	1235
Multicast	<input type="checkbox"/>
Transport Bitrate	8000000
Protocol	udp
Local Address	127.0.0.1
Local Port	1233

Video	
Codec	mpeg2
Width	720
Height	576
16x9	<input type="checkbox"/>
Bitrate	7000000

ASI buffer=100 % q=100 queue=100

Network section.

**Destination Address:**

destination IP address, for instance, 127.0.0.1 or multicast address, like 224.1.1.2 when operating in Multicast (IGMP) mode

**Port:** destination port address

**Multicast** - multicast address that should be set in receiver

**Transport Bitrate:** total streaming bitrate, including audio and video in ASI (DVB) mode or zero in IPTV mode

**Protocol:**

**UDP** - udp streaming

**ASI** - ASI streaming ( on supported Dektec devices)

**TCP** - tcp streaming (used with udp.exe)

**RTP** - rtp streaming (the same mode has to be set on the receiver)

**Local Address** - specify local network card address or leave the field empty

**Local Port** - specify local port number or leave the field empty

Video

**Codec** - mpeg-2, avc(h.264)

**Width** - width of the output picture (720, 544, 352)

**Height** - usually 576 for PAL, 480 for NTSC

**16x9** - 16x9 mode

**bitrate** - video bitrate

**B Frames** - value of 3 is recommended for MPEG2, (min 0- max 2) for H264, depending on CPU power

**blur** - set this option on very low bitrates

**deinterlace** - progressive encoding (for LCD's, plasma, etc)

**video PID** - video program ID in the transport stream

Audio

**Audio bitrate** - audio bitrate (valid are values of 128000 160000 192000 256000 384000, other are not allowed)

**audio PID** - audio program ID in the transport stream

--- to test the output stream:

to test the stream on the VLC player ([www.videolan.org](http://www.videolan.org)), set the Multicast option, set 224.1.1.2 as the destination address and the same address use in VLC

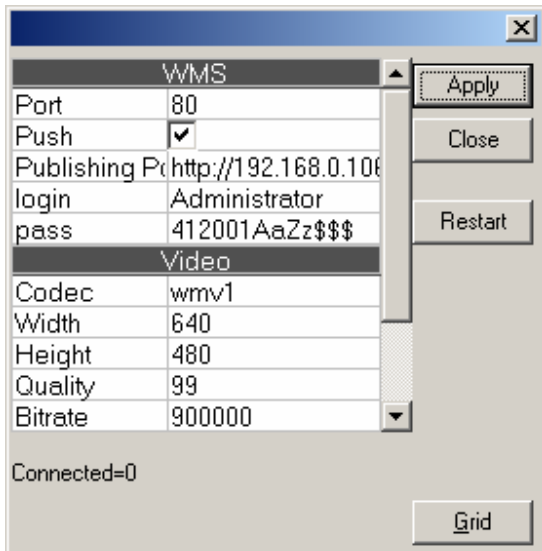
from the command line

```
vlc.exe udp://224.1.1.2:1234
```

for RTP mode the command line looks like this:

```
vlc.exe rtp://224.1.1.2:1234
```

**Windows Media Services** mode (selected during Setup)



**Port:** publishing point port number (Pull mode only)

**Push:** publishing point mode (Push/Pull) , Push is by default (recommended)

**Publishing Point:** complete URL to the publishing point (server-side) ( <http://server-sddress/point-name> )

Microsoft Windows Server 2003, 2003R2, 2008, 2008R2 is supported with WMS (Windows Media Services) enabled

**Login, Pass** – username and password to the publishing point

Video

**Codec** – wmv1, wmv9, vc-1 : video encoder selection (Windows Media 11 codec pack is required to use with vc-1)

**Width** - output width,

**Height** - output height,

**bitrate** - video bitrate

**blur** - use with noisy video on ultra-low bitrates

**quality** – you can safely set value of 90 for wmv1, but with vc-1 you will need very fast CPU to set even 30

**margin** – number of pixels to strip off the source video edges (black borders, VBI area, etc)

Audio

**Audio bitrate** - (default is 64000 bps)