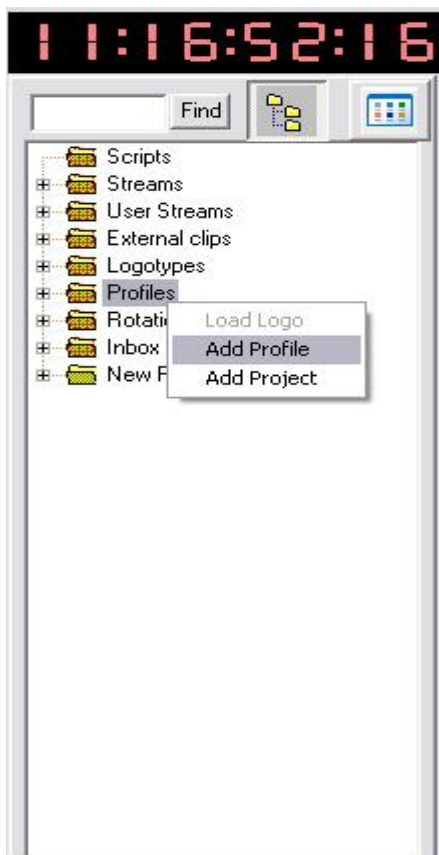


## Kramer Switchers using with TELE 2.2/INFO/IP

TELE 2.2/Info/IP products allow to manage switching channels in Kramer Switchers. Usually this procedure is used when one needs to change the input signal source fed to the capture card of Stream Labs play out automation system. The connection between TELE server and Kramer device is implemented via COM port (RS 232) using P2000 protocol. Support of P2000 protocol is obligatory requirement for any Kramer Switcher to work with TELE.

In order to set TELE to work with Kramer Switcher the following steps should be done.

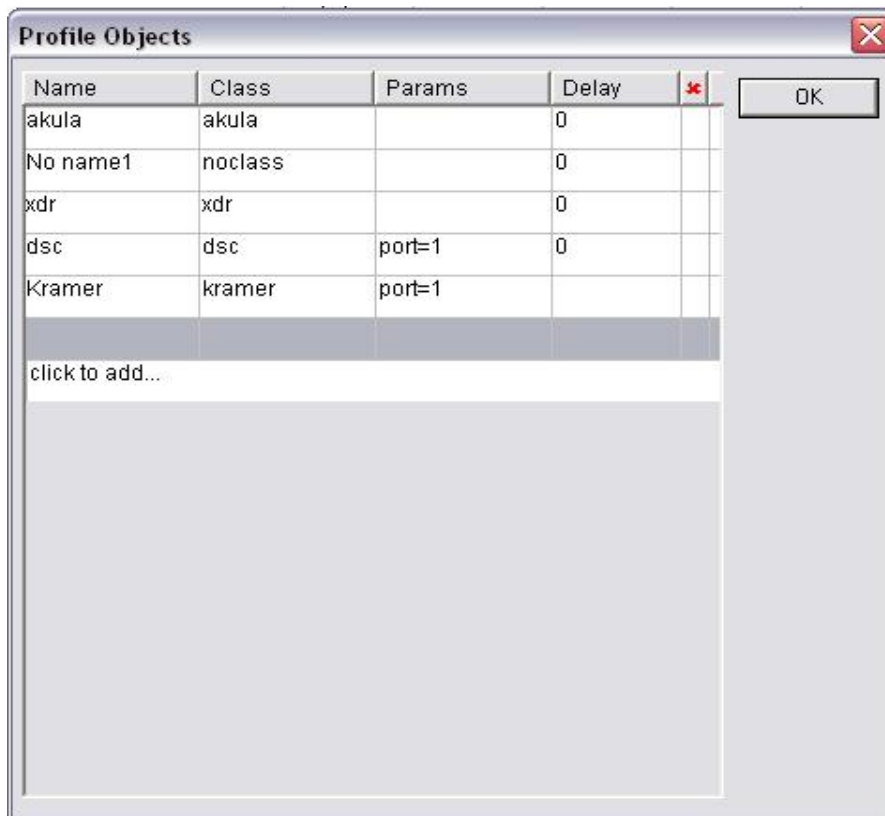
- 1) Run TELE, right-click on the **Profiles** branch of Project Tree and choose **Add Profile** from the pop-up list. It is recommended to name the profile according to its purpose (Kramer, Kramer1, etc.) in order to differ it from the other profiles.



- 2) Unfold **Profiles** branch of Project Tree and open created profile. In the appeared window press **Objects** button. Next window shows available classes for support of the various devices. Press **Click to add** to add Kramer Class. When filling the settings for class use **Tab** button to follow the new setting.

Name: Kramer -> Tab -> Class: Kramer -> Tab -> Params: port=1 -> Tab -> Ok

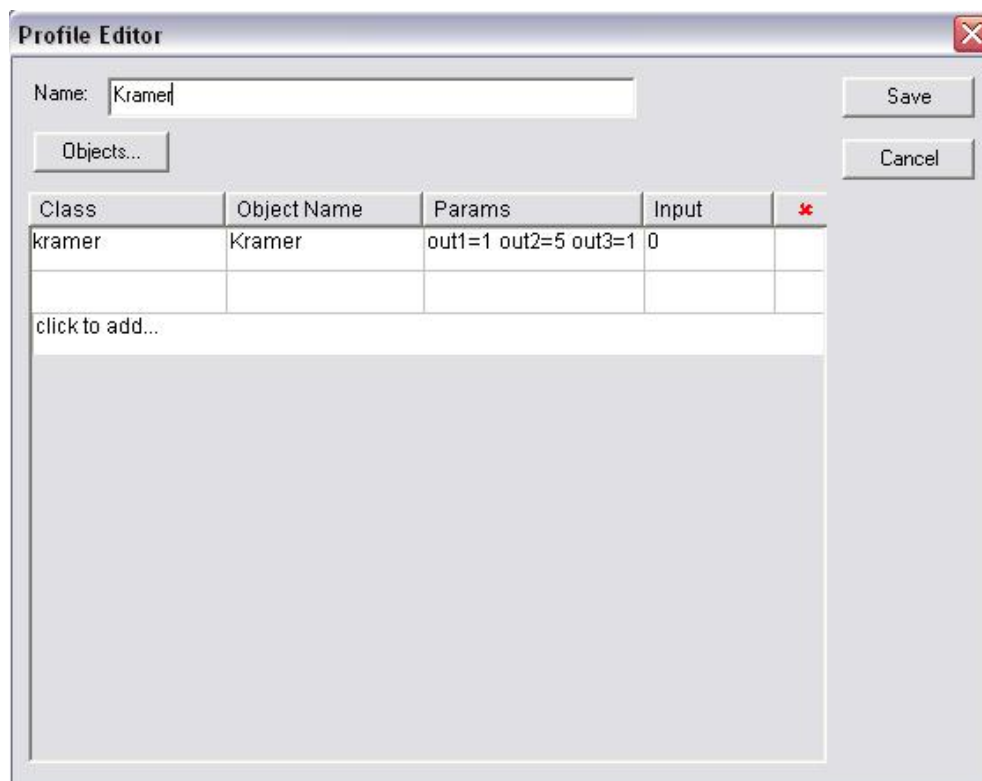
**Port number parameter** is used to set the number of the COM port used for connection. If one uses COM2 then **port=2** should be set.



3) Create new object in Profile Editor.

Object name: Kramer -> Tab -> Params: out1=1 out2=3 out3=6 out4=4 -> Save

**Params** setting of the object allows you to set the switching of channels in Kramer Device. The syntax of **Params** should be like below: out[output channel number] = [input channel number][Space]out[output channel number] = [input channel number][Space]



- 4) Add created Kramer profile to TELE schedule to the column Profiles by drag-and-drop from Profiles branch of Project Tree.

11:00:00:00		Anchor			
11:00:00:00		Empty	01:00:00:00	Kramer	
12:00:00:00		Anchor			

Before playing of the line with assigned Kramer profile the switching of the channels on Kramer switcher according to the **Params** setting will be performed.

If you have any questions on the procedure or encounter any problems implementing it please contact Stream Labs support at [support@stream-labs.com](mailto:support@stream-labs.com) or by Skype: [streamlabs-support](https://www.skype.com/en/contacts/streamlabs-support)