

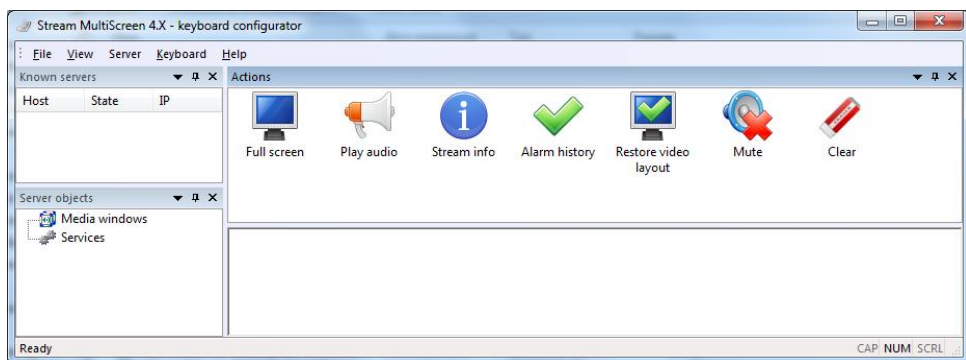
Installation and setup of remote keyboard for monitoring system Multiscreen 5.x

Software module «Stream MultiScreen – keyboard configurator» is dedicated to control of Multiscreen 5.x over the local network. The above mentioned module provides the following features for system operators:

- Output of any monitored service in full-screen mode to any monitor, connected to the server;
- Output/redirection of sound, originating at any service, to the speakers of Multiscreen server;
- Output/redirection of service information to the screen of Multiscreen server;
- Output/redirection of text boxes with historical alarms to the screen of Multiscreen server;
- Restoration of original visualization design on any monitor, connected to Multiscreen server;
- Turning down an audio from speakers of Multiscreen server.

For installation of «Stream MultiScreen – keyboard configurator» module it is necessary to launch file ms4_keyboard_2.x.exe on any PC, connected to Multiscreen server via local network, and then follow installation instructions.

After completion of installation, launch «Stream MultiScreen – keyboard configurator». You can see on a picture below, how looks the main window of the program:



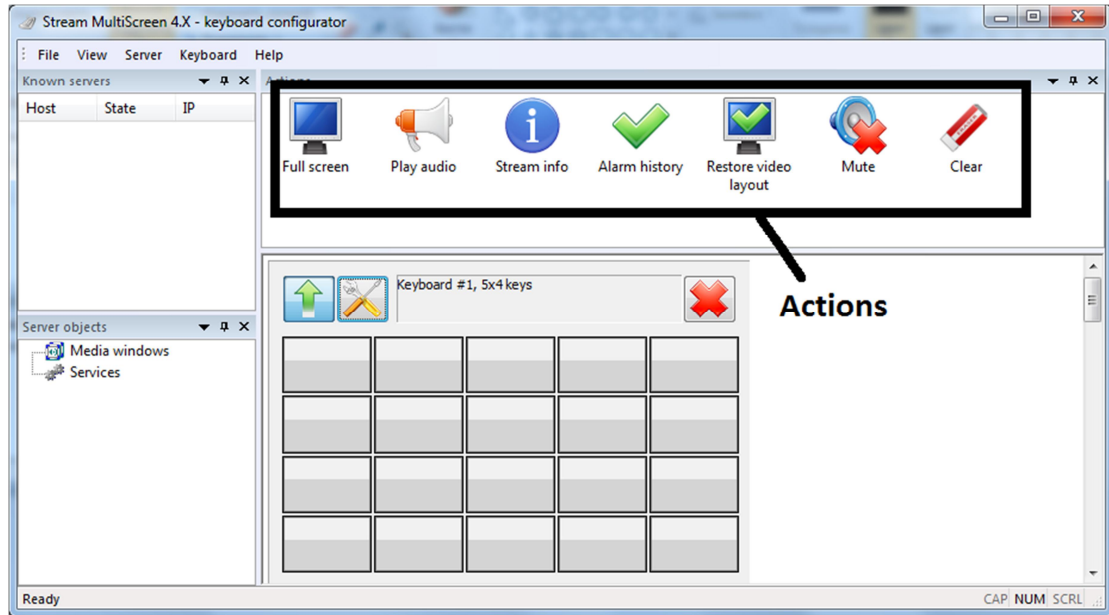
1. It is imperative to add Multiscreen server, therefore select «Server» -> «Add». You will see «Add Multiscreen Server» pop-up window; enter network address of the server and press «OK».



2. After successful addition of server, list of «Server objects» will contain information about all monitors, connected to the server, and all monitored services.
3. Then, create a virtual keyboard for control of Multiscreen server: go to «Keyboard» -> «Add layout». You will see pop-up window «Add new keyboard layout», in which you can define number of buttons in a row and number of rows. Press «OK».



4. Finally, the window will display blank design of the keyboard. Example of 5x4 design is shown on a picture below:



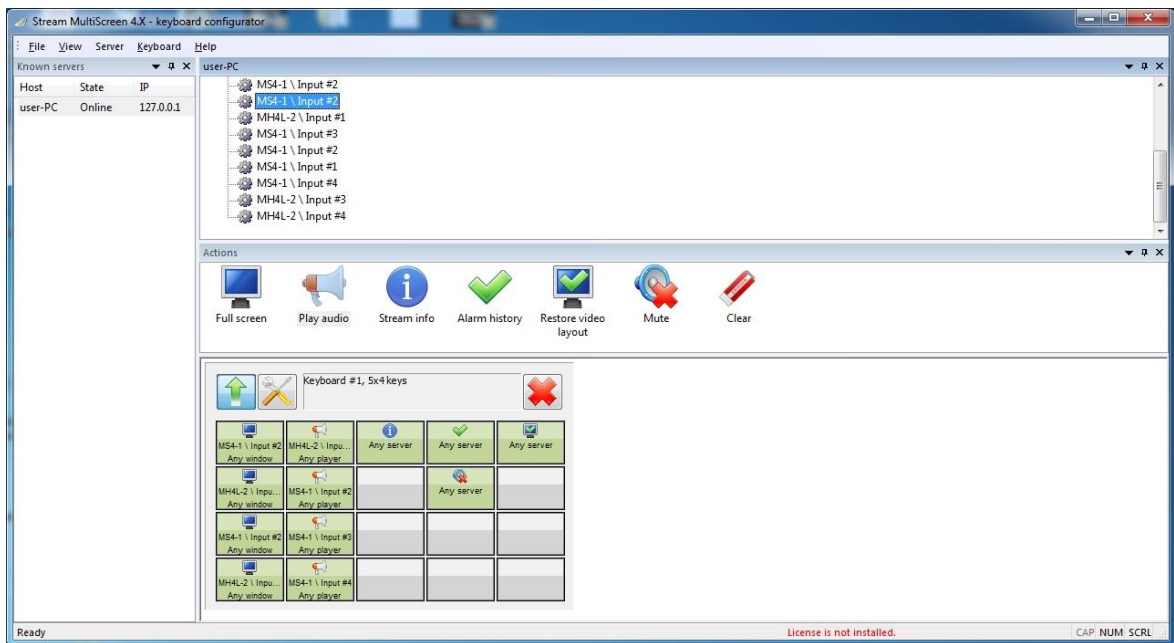
Let's review available actions:

- Full screen – turn on full screen mode;
- Play audio – self-explanatory;
- Stream info – output of service information;
- Alarm history – output of historical alarms;
- Restore video layout – restoration of original visualization design on monitors;
- Mute – silence audio;
- Clear – clear content of a button.

All actions can be mapped to the keyboard by **Drag&Drop**, or with a right click on a button and selection from the context menu.

Full screen and Play audio actions must be linked to one of the controlled services. Any service can be mapped to the keyboard in the same fashion as an action, using **Drag&Drop**. Besides, if several monitors are connected to a server, then any monitor could be **Drag&Drop**'d to the button with already mapped Full screen action.

Picture below presents example of the keyboard, mapped to actions and services, available in «Stream MultiScreen – keyboard configurator»:



In addition, name could be assigned to any button of the keyboard – right click on a button and select «Edit label» from the context menu.

Note: «Stream MultiScreen – keyboard configurator» must have a license on a dongle for «Stream MultiScreen» server. Without license, module will give a warning once you attempt using it. If hardware keyboard, manufactured by “Stream Labs”, is connected to remote work station, then license is not required.

Connection and setup of hardware keyboard for Stream MultiScreen system

Hardware keyboard, manufactured by “Stream Labs” functions along with «Stream MultiScreen – keyboard configurator» module.

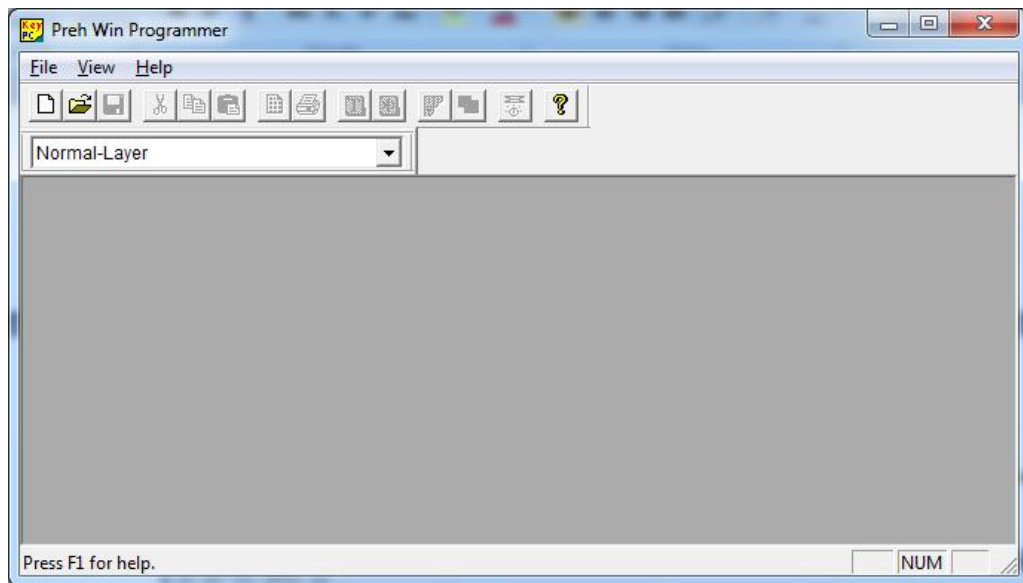


For proper work with «Stream MultiScreen» system, keyboard must be connected via USB interface to any PC in local network with already installed «Stream MultiScreen» server. Also «Stream MultiScreen – keyboard configurator» module and program «WinprgV232.EXE» must be installed
Note: all required software can be requested from our tech support at support@stream-labs.com

Program «WinprgV232.EXE» will install all necessary drivers and module for update of keyboard firmware. Follow instructions during installation, accept license agreement and mark «Install driver pack V1.4.0.0» check box.

Once this installation is complete, the next dialog window for installation of «Preh driver pack» will show up. At the stage «Default interface», select «USB keyboard» and follow further instructions until installation is completed.

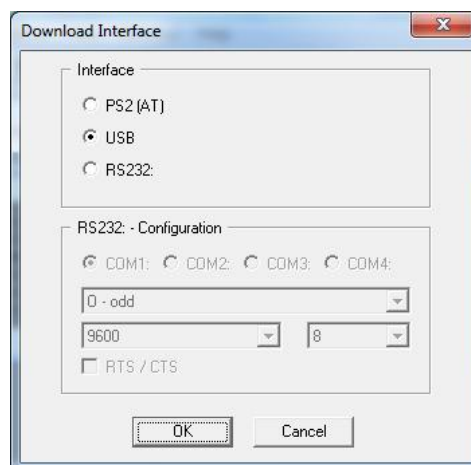
Before you start working with keyboard, its firmware must be updated using program «Preh Win Programmer».



Launch the program, go to «File» -> «Open» and select file «PHREC_12X7_LAYOUT.MWF».

Note: you may also request this file from Stream Labs' tech support.

Then go to «File» -> «Update keyboard» and select «USB» radio button in pop-up window. Press «OK».



You will receive a warning, that you must not operate during installation either keyboard or mouse; and update of firmware will get started.

After successful firmware update, buttons of the keyboard will function according assignments, made in «Stream MultiScreen – keyboard configurator» module.

«Stream Labs» keyboard has removable caps. Pre-printed inserts with the names of the buttons could be installed inside those caps. In «Stream MultiScreen – keyboard configurator» module go to menu «Keyboard» and select «Print».