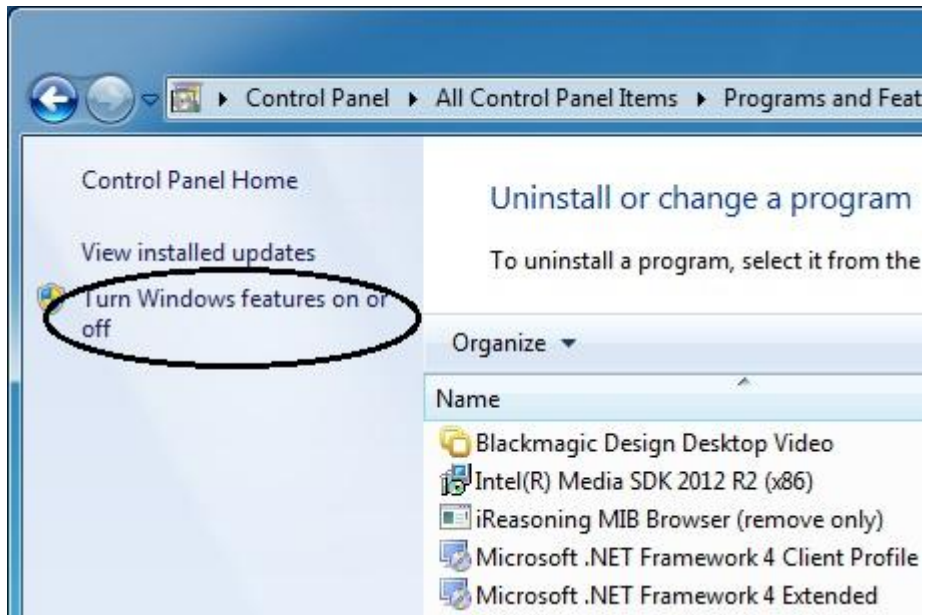
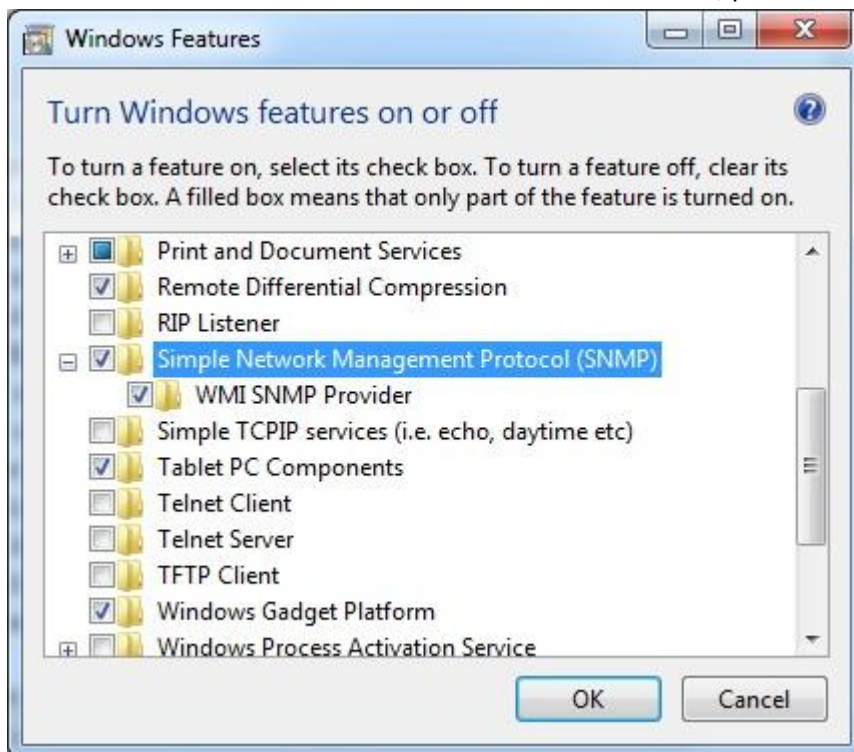


## SNMP MultiScreen 4x.

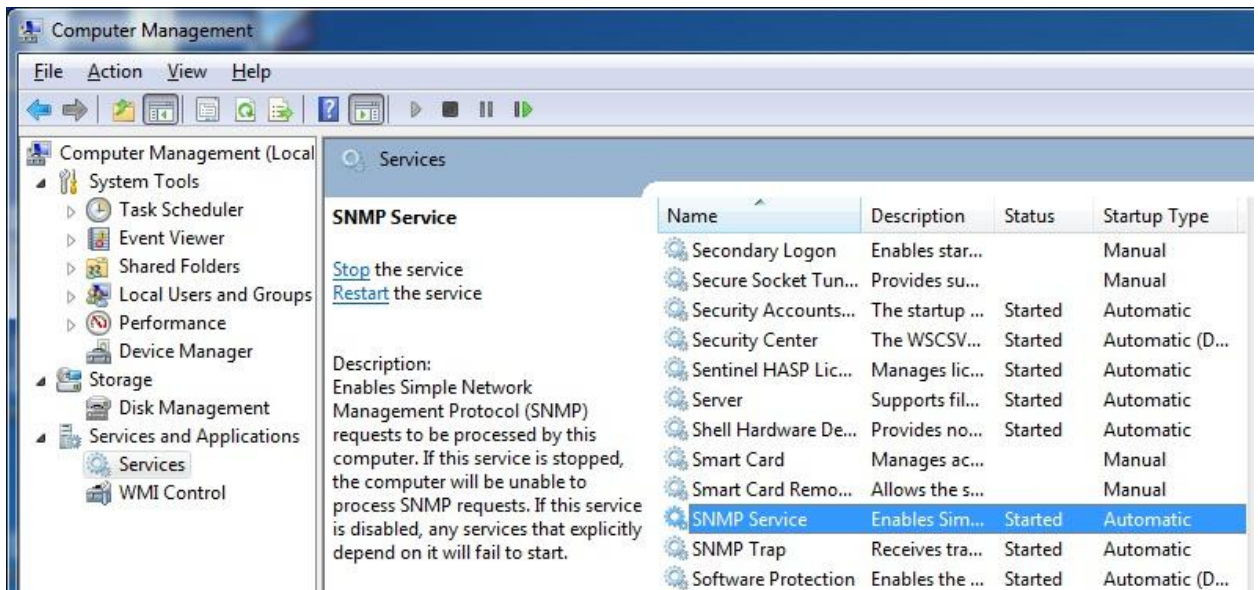
1. Download and install **ms4\_snmp\_agent.4.x.exe** on the MultiScreen server.
2. Go to **Control Panel > Programs and features** and select **Turn windows features on or off**



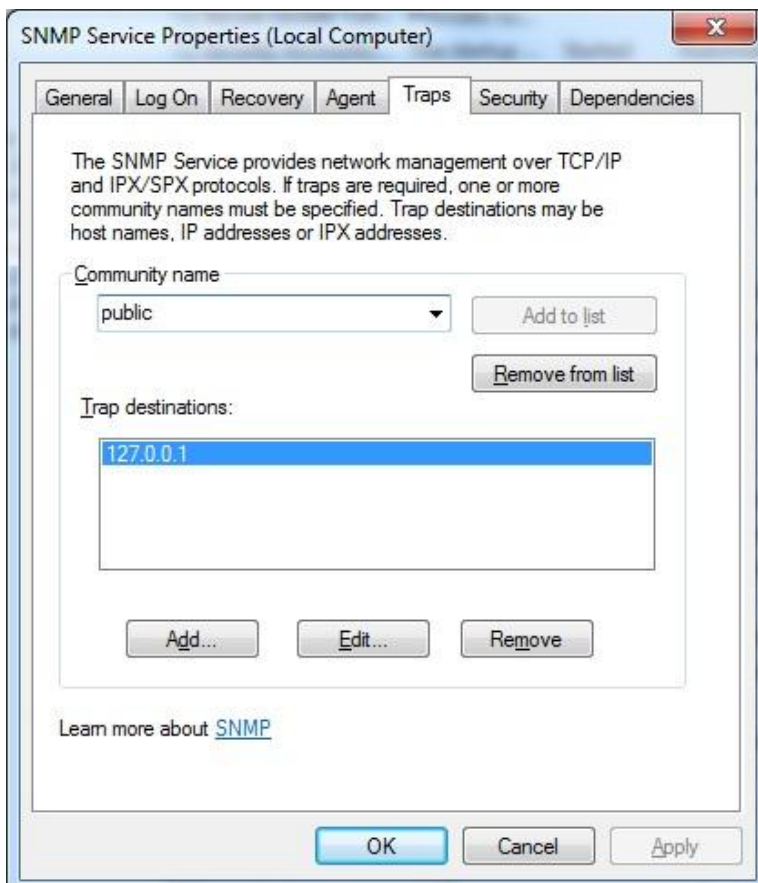
3. Then check the box next to **SNMP** and **WMI SNMP Provider**, press OK



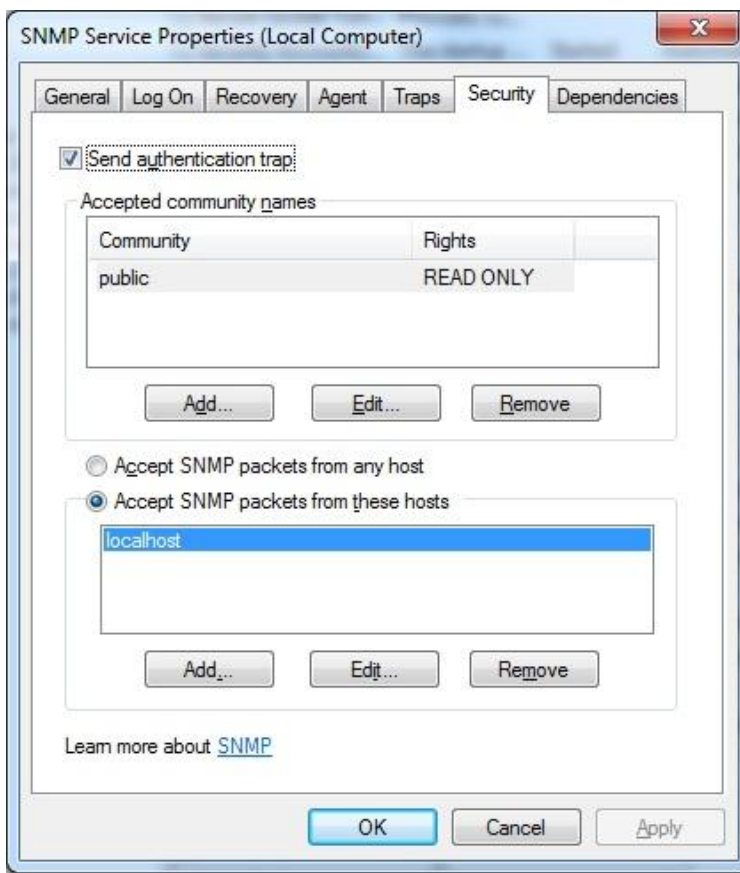
4. Go to **Computer management > Services**. SNMP service and SNMP Trap should be started and have automatic Startup type, you can change it in properties if necessary.



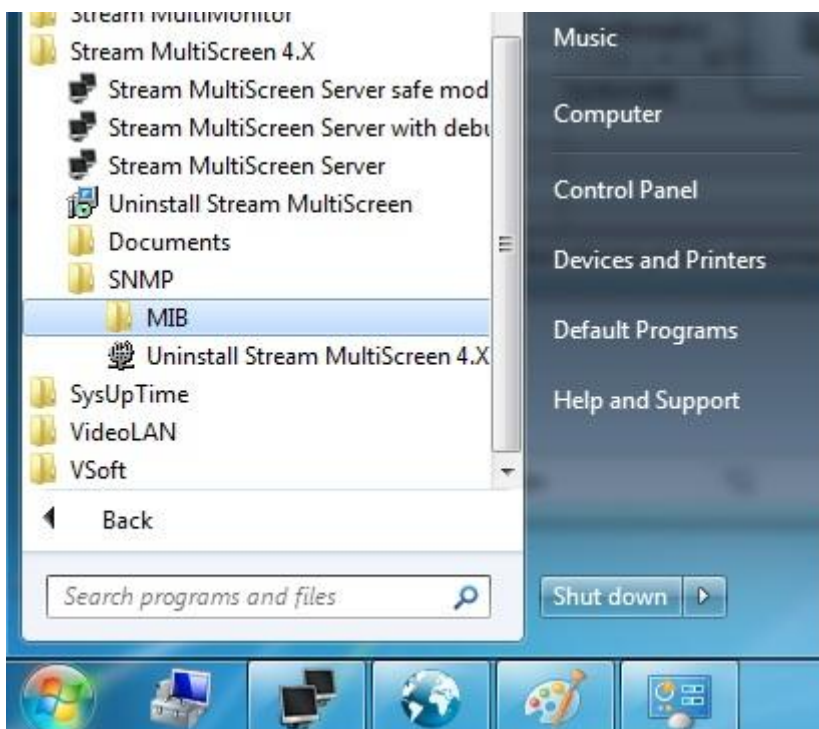
5. Go to SNMP service properties(Traps tab) and add Trap destination 127.0.0.1 as on the picture below:



- Go to Security tab and add public community with read-only rights as accepted communities as on the picture below:



- Apply all changes.
- Go to **Start > All Programs > Stream MultiScreen 4.X > SNMP > MIB**. You can browse .MIBs from this folder in any MIB Browser you want.



9. Example in iReasoning MIB browser, **File > Load MIBs** then select MultiScreen MIB file from SNMP folder:

The screenshot shows the iReasoning MIB Browser interface. The address is 127.0.0.1 and the OID is .1.3.6.1.4.1.38775.6. The MIB tree on the left shows the path: iso.org.dod.internet > private > enterprises > streamlabs > slms4SnmpExt. The result table on the right displays the following data:

Name/OID	Value	Type	IP:Port
slms4SnmpExtVersion.0	4.1.2.6	OctetString	127.0.0.1:161
slms4ServerState.0	online (1)	Integer	127.0.0.1:161

Below the tree, a metadata table for the selected MIB is shown:

Name	slms4SnmpExt
OID	.1.3.6.1.4.1.38775.6
MIB	SLMS4-MIB
Syntax	
Access	
Status	
DefVal	

The status bar at the bottom shows the path: .iso.org.dod.internet.private.enterprises.streamlabs.slms4SnmpExt